

Policy Levers & Promising Models to Advance Green Schoolyards

Moderator:

Anne-Marie Spencer, PlayCore

Panelists:

- Hanaa Hamdi, PhD, The Trust for Public Land
- Holly Hunt, School Health Branch, Centers for Disease Control
- Alex Mays, Healthy Schools Campaign
- Jeff Vincent, PhD, Center for Cities + Schools, University of California, Berkeley



Expanding Hospital Community Benefits to Invest in Green Schoolyards

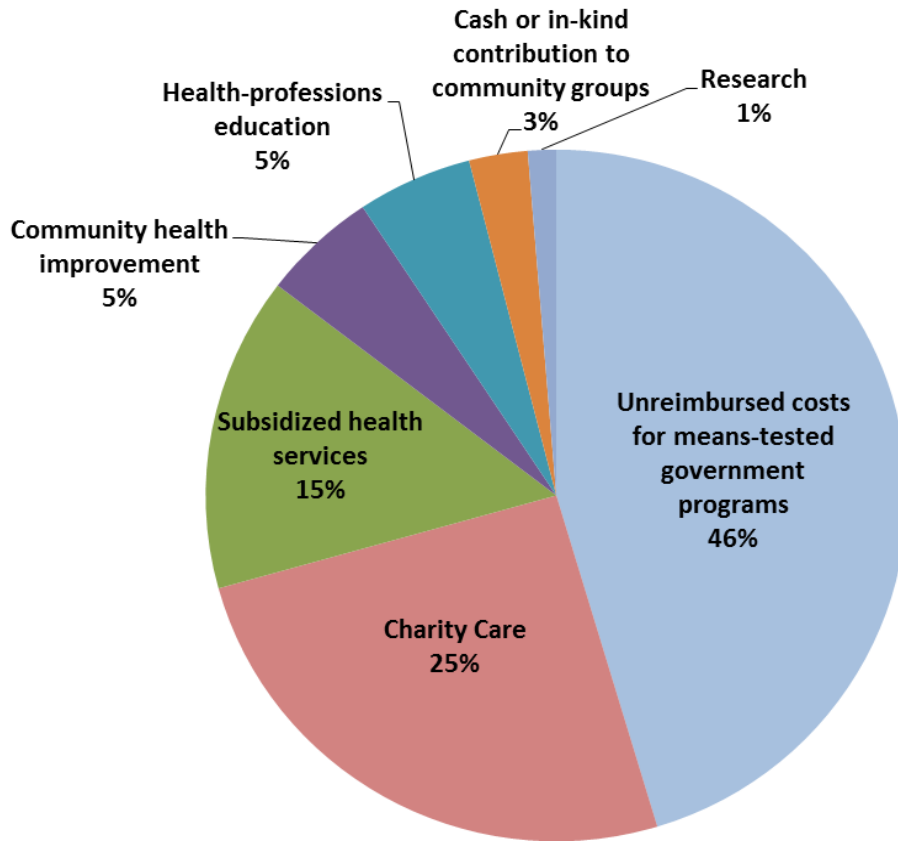
Hanaa A. Hamdi, Ph.D. | Public Health Director | The Trust for Public Land
Children & Nature Network Leadership Conference | Oakland, CA. May, 2018

Tax-exempt Hospitals & Community Benefits

Hospital Community Benefits (HCBs) are initiatives and activities undertaken by tax-exempt hospitals to improve the health in the communities they serve.



Hospital Community Benefit Spending



Unreimbursed Costs of means-tested government programs: 46%

Charity Care: 25%

Subsidized health services: 15%

Community Health Improvement: 5%

Health-professions education: 5%

Cash or in-kind contribution to community groups: 3%

Research: 1%

The Cost of “Sickcare”

Health Care Expenditures

\$3.3 trillion

National Health Expenditure

\$245 billion

Cost of diagnosed diabetes

\$176 billion

Direct medical costs

\$69 billion

Decreased productivity

Health Profile of Americans

50% live with at least one CC

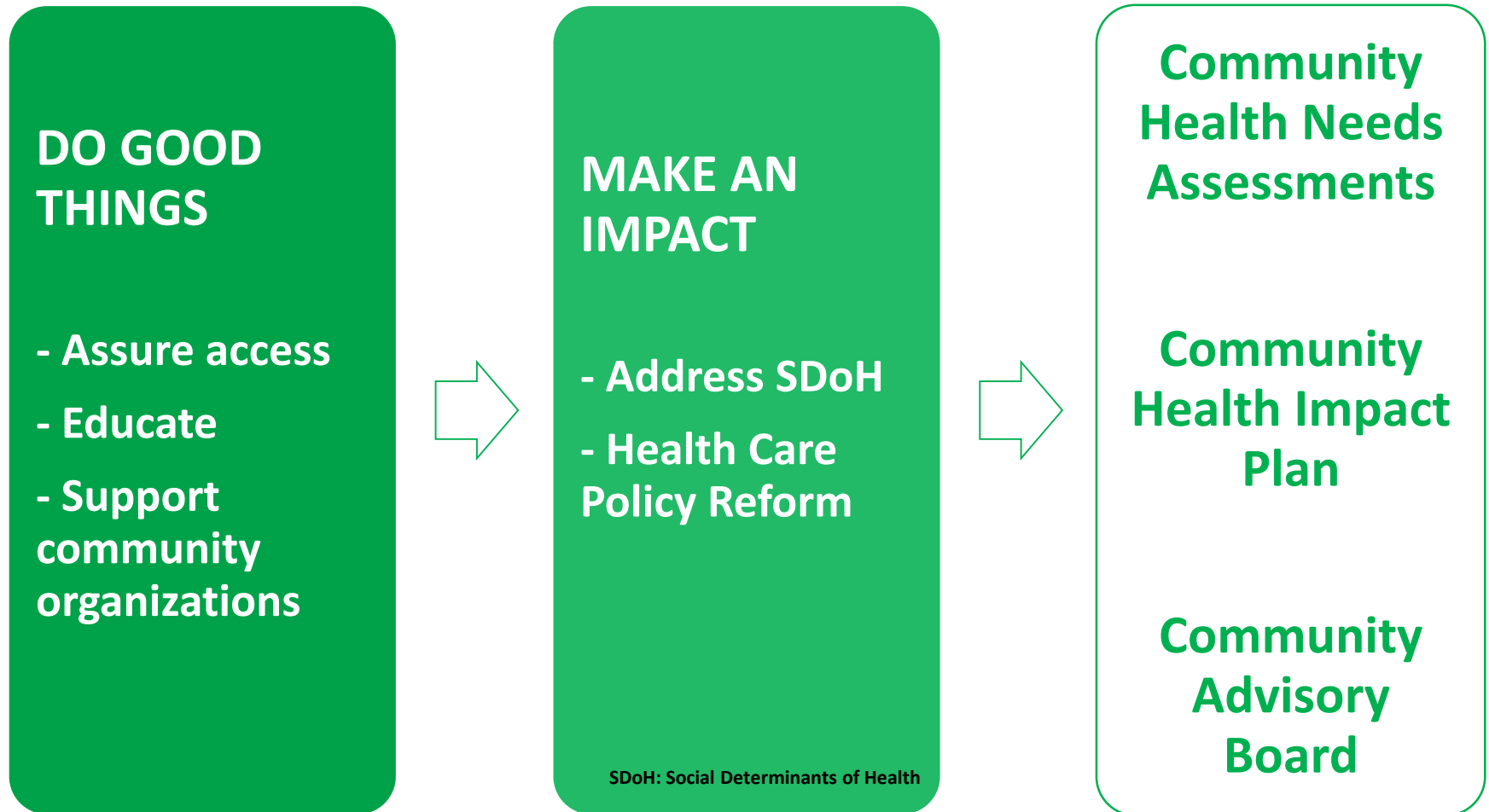
1 in 4 live with MCCs

3 in 4 individuals age 65+ live with MCCs

CC: Chronic Conditions

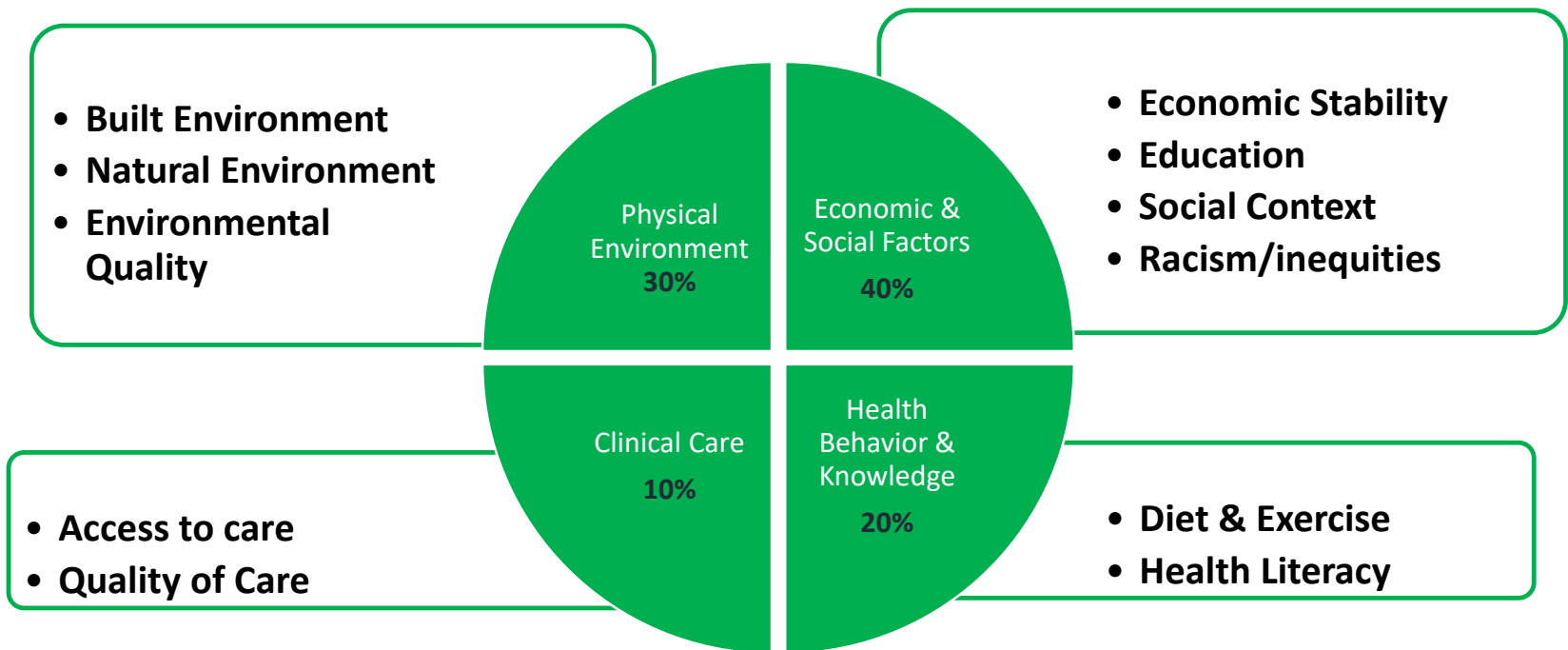
MCC: Multiple Chronic Conditions

From Charity Care to Accountable Care



Hospitals Invest in Determinants of Health

Determinants of Health



Examples of Hospital Community Benefit Investments

Trinity Health to Invest \$80M in Community Health Preventative Programs

BY ADRIENNE ROBERTS

Published: Friday, November 20, 2015



Livonia-based Trinity Health will invest \$80 million over the next five years in grants and services that focus on policy, systems, and environmental changes that aim to reduce tobacco use and obesity, while addressing other health issues.

"This program will help us advance health and quality of life by addressing the root causes of poor health," says Dr. Bechara Choucair, senior vice president of safety net and community health at Trinity Health. "It represents a



KAISER PERMANENTE®

Share Our Views, News and Moves

About Us

News & Views

In The Community

Making Headlines

Research

News & Views

Press Release

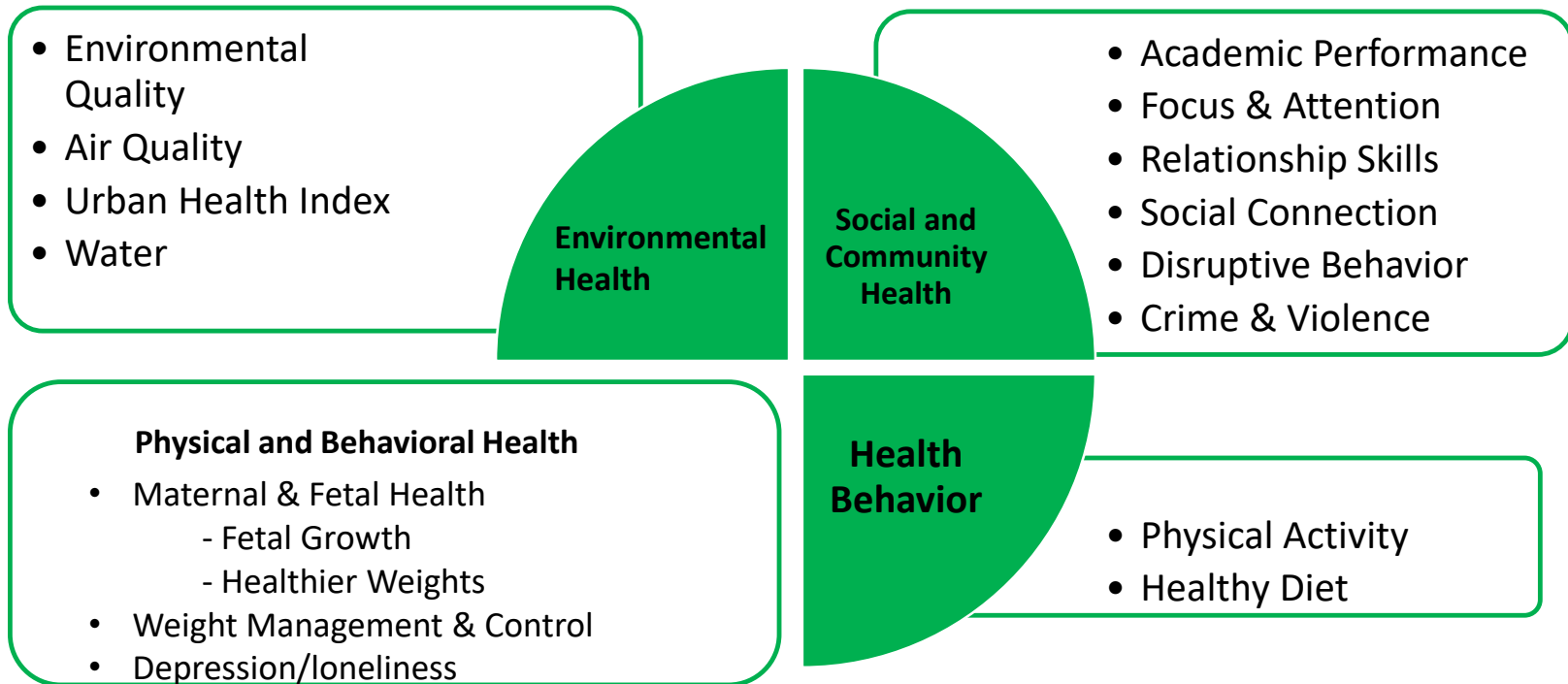
Kaiser Permanente Commits \$2 Million to Gun Injury Prevention Research

New public health initiative to focus on preventing injuries and death from firearms

April 9, 2018

THE
TRUST
FOR
PUBLIC
LAND

Multiple Health Benefits of Green Schoolyards



Leveraging HCB Investment For Green Schoolyards

Partnerships

- Community Advisory Boards
- Community Health Needs Assessments
- Community Improvement Plans

Policy & Regulations

- Local
- State
- Federal



Thank you!

References:

<http://www.healthcarefinancenews.com/news/tax-exempt-hospitals-spend-674-billion-community-benefit-outweighing-foregone-tax-revenue>. Accessed January 3, 2018.

[Multiple Chronic Conditions—A Strategic Framework: Optimum Health and Quality of Life for Individuals with Multiple Chronic Conditions](#). Washington, DC: US Dept. of Health and Human Services; 2010. Accessed January 10, 2017.

[Chronic Conditions Among Medicare Beneficiaries](#). Baltimore, MD: Centers for Medicare & Medicaid Services; 2012. Accessed January 10, 2017

Centers for Disease Control and Prevention, The Burden of Chronic Diseases and Their Risk Factors: National and State Perspectives 2002 (National Center for Chronic Disease Prevention and Health Promotion, 2003. Accessed December 18, 2016, at <http://www.cdc.gov/nccdphp/burdenbook2002/index.htm>

A. M. Dzagamov, D. D. Dimitrova; E. D. Dimitraakova. "Association between residential greenness and birth weight: Systematic Review and meta-analysis" *Journal of Urban Forestry and Urban Greening*. Vol 13.no 4. (2014): 621-629.

S.M. van Dillen, S.D. Vries, P.P. Groenewegen, P. Spreeuwenberg. "Greenspace in urban neighbourhoods and residents' health: adding quality to quantity." *Journal of Epidemiology and Community Health* 66, no. 6 (2012).

Jo Peacock, Rachel Hine, Jules Pretty. *The mental health benefits of green exercise activities and green care*. Report for MIND, 2007

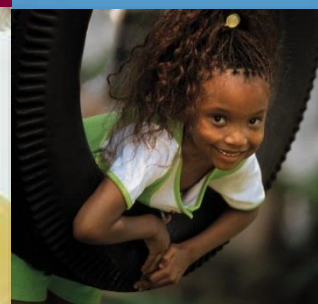
J. Barton, M Griffin, J. Pretty. "Exercise, nature, and socially interactive based initiatives improve mood and self-esteem in the clinical population." *Perspectives in Public Health* 132, no. 2 (2012): 89-96.

Mair JS, Mair M. Violence prevention and control through environmental modifications. *Annu Rev Publ Health*. 2003;24:209–25.

Yen IH, Syme SL. The social environment and health: a discussion of the epidemiologic literature. *Annu Rev Publ Health*. 1999;20:287–308

Wei E, Hipwell A, Pardini D, et al. Block observations of neighbourhood physical disorder are associated with neighbourhood crime, firearm injuries and deaths, and teen births. *J Epidemiol Community Health*. 2005;59:904–8

The Whole School Whole Community Whole Child Approach: Opportunity to Advance the Green Schoolyards Movement



Holly Hunt, MA
Chief, School Health Branch (SHB)
(CDC Healthy Schools)
Division of Population Health

National Center for Chronic Disease Prevention and Health Promotion

Division of Population Health | School Health Branch

Division of Population Health | School Health Branch



CDC Division of Population Health School Health Branch (CDC Healthy Schools)

Shared Priorities between health and education:

- ❑ Increase quantity and quality of **physical education, health education and physical activity**
- ❑ Improve the **nutritional quality of foods** provided in school
- ❑ Improve the capacity of schools to **manage chronic conditions**

CDC's Role:

- ❑ Quality of health education in schools
- ❑ Evidence-based guidelines and recommendations for school programs and policy
- ❑ Tools and resources for educators and administrators
- ❑ Training and professional development

Healthy Students Do Better in School

Students that are....

Physically active



Eating breakfast and
healthy foods



Managing their chronic
health conditions (e.g.,
asthma, diabetes)



- Have increased test scores
- Have increased grades
- Have increased school attendance
- Have improved classroom behavior

Source: Michael et al. JOSH. 2015;10;740-58.



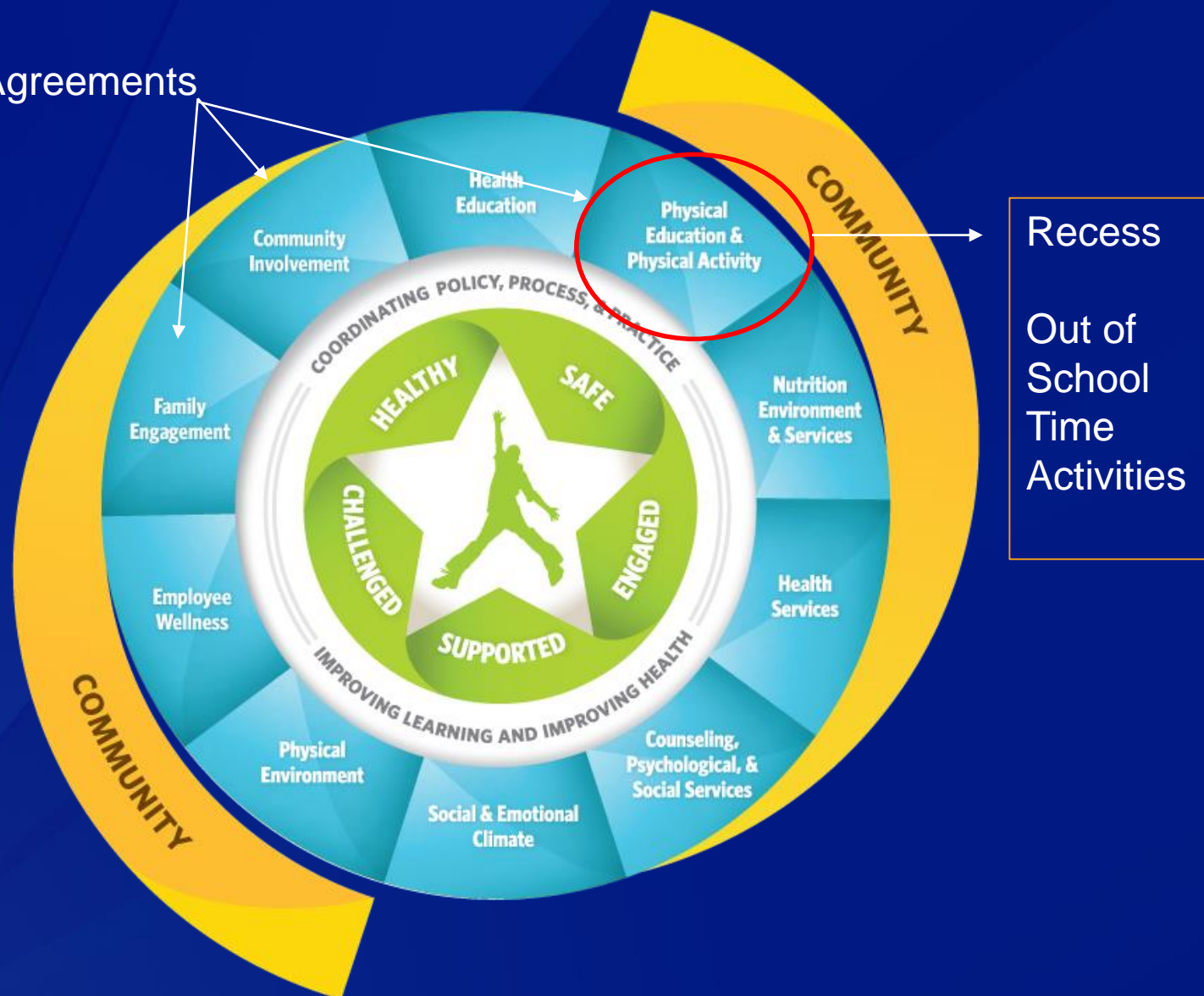
Whole School Whole Community Whole Child (WSCC)



School and Community Gardens



Joint Use Agreements



Virtual Healthy School



Virtual Healthy School (VHS)



File Formats Help:

How do I view different file formats (PDF, DOC, PPT, MPEG) on this site?



CDC Healthy Schools

Healthy Students, Ready to Learn



Nutrition Environment



Physical Activity



Obesity Prevention



Chronic Conditions



HEALTH & ACADEMICS

DATA & STATISTICS

PARENT ENGAGEMENT

TOOLS & TRAINING

LOCAL SCHOOL
WELLNESS POLICYSCHOOL HEALTH
GUIDELINES

RESOURCES

MULTIMEDIA

Whole School, Whole Community, Whole Child



A collaborative approach to learning and health

www.cdc.gov/healthyschools



THANK YOU!

Advancing Green Schoolyards through ESSA Implementation

HEALTHY SCHOOLS
CAMPAIGN

Space to Grow
transforms
Chicago
schoolyards into
vibrant spaces to
play, learn and
be outside.

**HEALTHY SCHOOLS
CAMPAIGN**



Health + Wellness

Outdoor Learning



Stormwater Management

Every Student Succeeds Act



**HEALTHY SCHOOLS
CAMPAIGN**

ESSA Title I

- State accountability systems: measure of school quality or success (36 states included chronic absenteeism)
- Report cards: required to include chronic absenteeism
- Needs assessments: required for underperforming schools
- School improvement: required to include evidence-based interventions; informed by needs assessment

Additional Opportunities in ESSA

- Title II: professional development and literacy
- Title IV: Student Support and Academic Enrichment Grants and community support for school success

What can you do?

- Check out your state ESSA plan
 - What did your state select for its school quality measure?
 - Are there opportunities for public engagement?
- Get involved in the development of your school district ESSA plan
- Make the case for how green schoolyards support academic performance, attendance and student physical and mental health

Thank you!

Alex Mays
Healthy Schools Campaign
alex@healthyschoolscampaign.org

Additional information can be found at
healthyschoolscampaign.org/policy/essa

Download
*State ESSA Plans to Support Student
Health and Wellness: A Framework for Action*
healthyschoolscampaign.org/state-essa-framework



**HEALTHY SCHOOLS
CAMPAIGN**



**CENTER FOR
CITIES+SCHOOLS**
UNIVERSITY OF CALIFORNIA BERKELEY



PK-12 Public School Infrastructure

Federal Funding

Jeff Vincent, PhD

jvincent@Berkeley.edu

Green Schoolyards Conference

May 21, 2018 / Oakland, CA



Wildflower Garden and Vegetable Beds (former)
Bancroft Elementary School

Our \$100 Billion Opportunity

Federal Funds for Public Schools Infrastructure



BASIC

[Re] Build America's School Infrastructure Coalition

21st CENTURY SCHOOL FUND

IMPROVING URBAN PUBLIC
SCHOOL FACILITIES



CENTER FOR
CITIES+SCHOOLS
UNIVERSITY OF CALIFORNIA BERKELEY

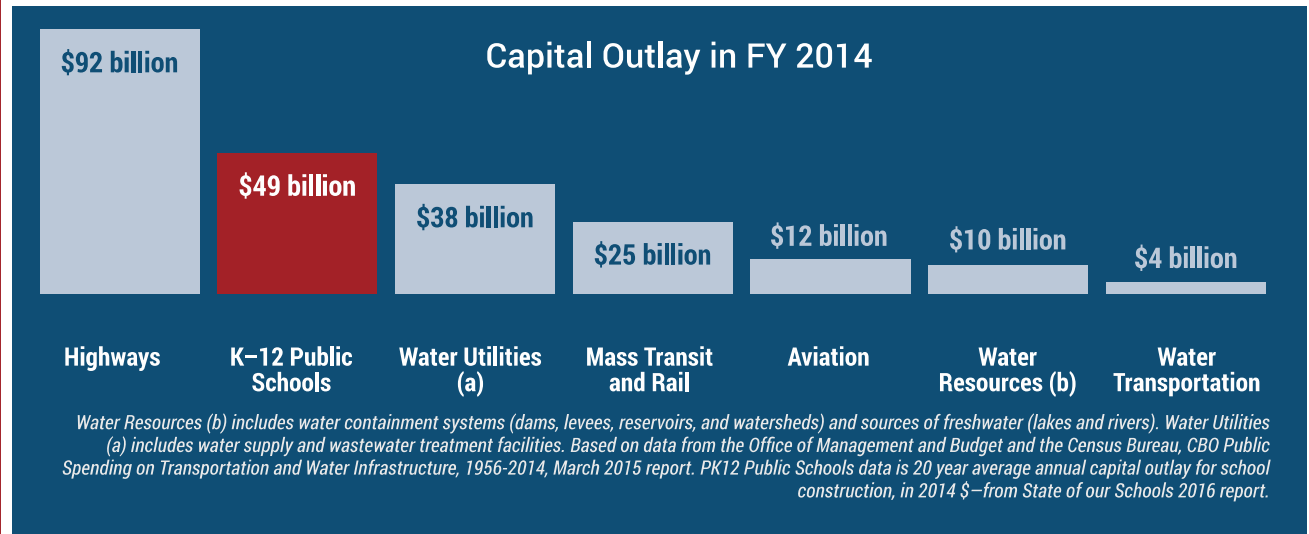
Essential places

55 million children and adults are in schools every weekday, 1 in 6 Americans.



Public school facilities sector

- 2nd largest sector of national infrastructure
- \$49 billion in capital investment a year
- 68% federal funding for transportation & water
- < 1% for public school infrastructure



\$87 billion annual need for capital projects

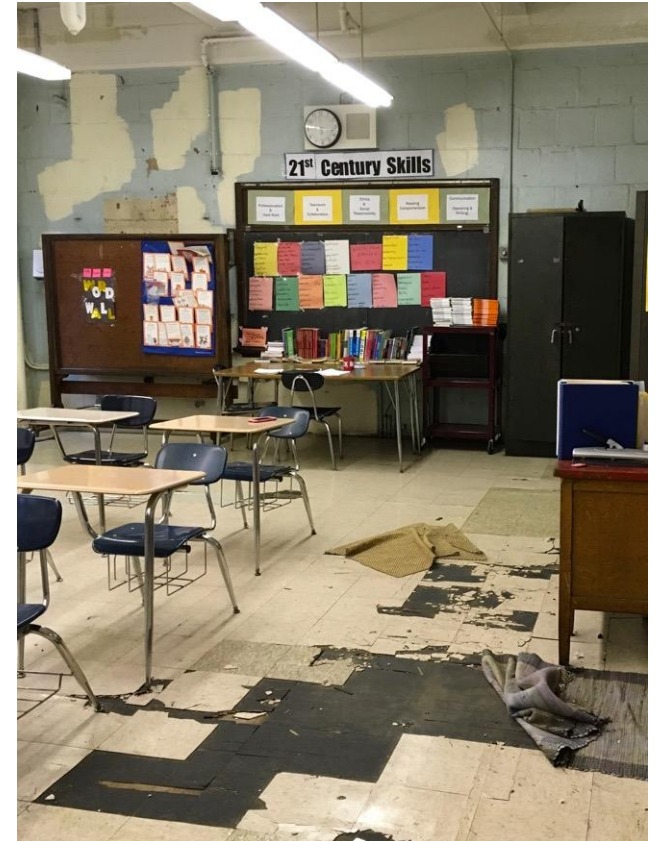
- **2% CRV to renew systems, components, and finishes beyond their useful life**
 - Roofs, boilers, HVAC, doors, windows, wiring, plumbing, etc.
- **1% CRV to catch up on deferred maintenance, health, safety and security standards**
 - Accessibility
 - Abating legacy toxics—lead, PCBs, asbestos
 - Resiliency for natural disasters
 - New security improvements for human threats
- **1% CRV to address educational program change**
 - Special education
 - Early childhood
 - Career and technical education
 - Support for instructional technology

**\$38
billion
annual
gap**

Over half of all schools are estimated to need major repairs.

Average age of schools is 44 years.

Local districts held \$425 billion in long term debt at the end of FY 2015.



Cost of neglect

25-Year-Old Textbooks and Holes in the Ceiling: Inside America's Public Schools: NY Times, April 16, 2018

"My public school is full of dedicated educators and students, but the building dates to 1938 and has barely been renovated. The level of dilapidation is something we've all become desensitized to. When I went out to take pictures, I realized how little I notice it on a day-to-day basis." HS Teacher, Providence, R.I.



Poor Quality Hardscape with Old Equipment
Martin Luther King Elementary School

Cost of neglect

TOXIC CITY  SICK SCHOOLS

DANGER: LEARN AT YOUR OWN RISK

By Barbara Laker, Wendy Ruderman, and Dylan Purcell / Staff Writers
Photos and video by Jessica Griffin / Staff Photographer

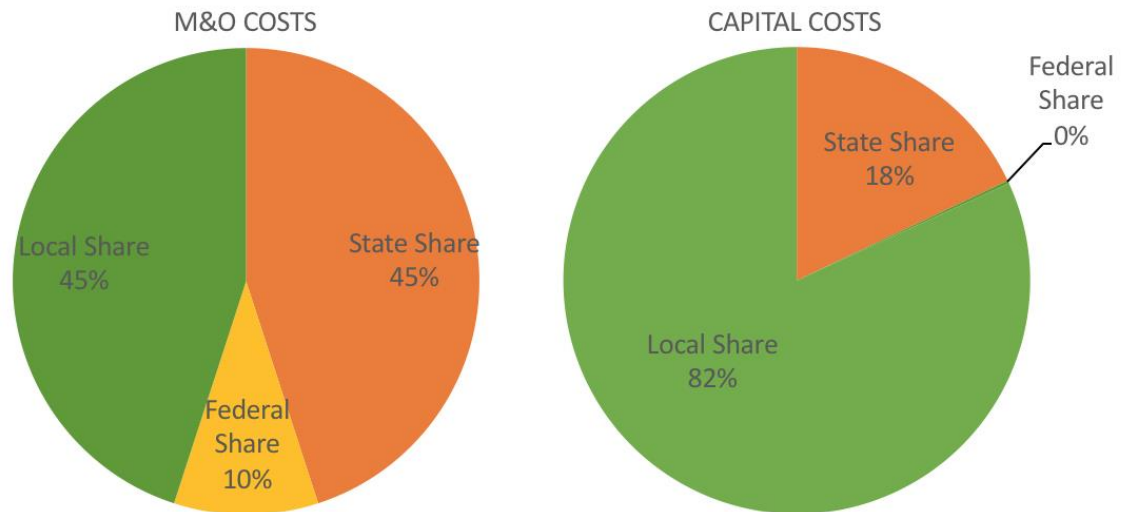
Thursday, May 3, 2018



Many Philadelphia schools are incubators for illness, with environmental hazards that endanger students and hinder learning.

AN INEQUITABLE FUNDING SYSTEM

Local communities pay 45% of M&O and 82% of capital construction outlay

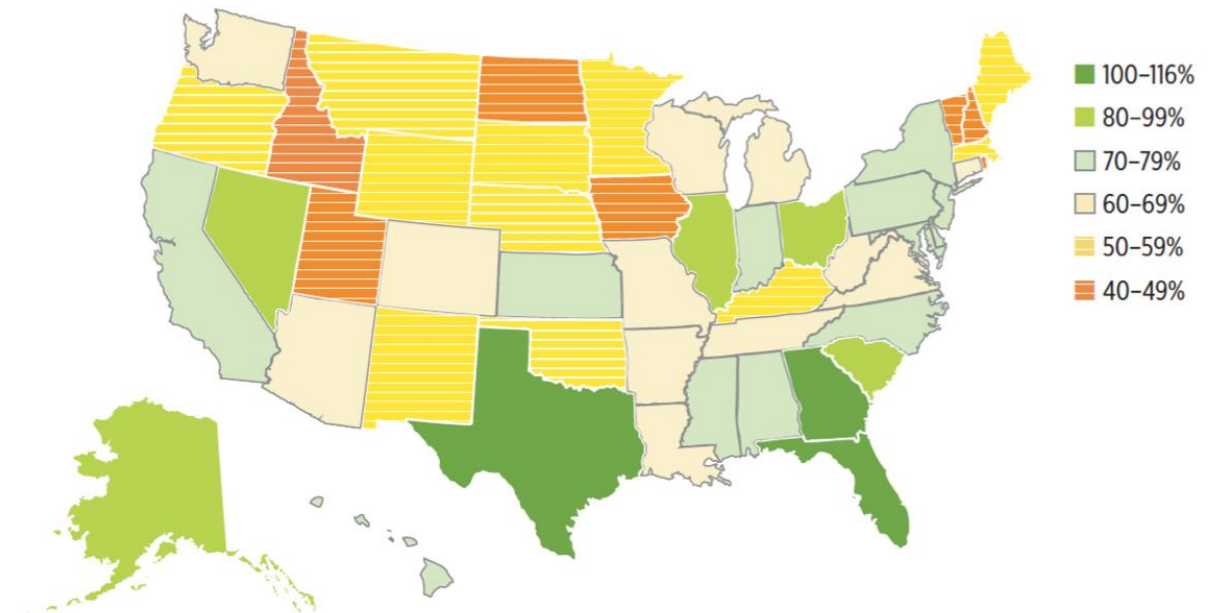


Because local wealth varies greatly, some communities have modern, high-quality schools, while others do not.

Source: State of Our Schools 2016

ON AVERAGE, STATES SPENDING ONLY 68% OF MODERN STANDARDS

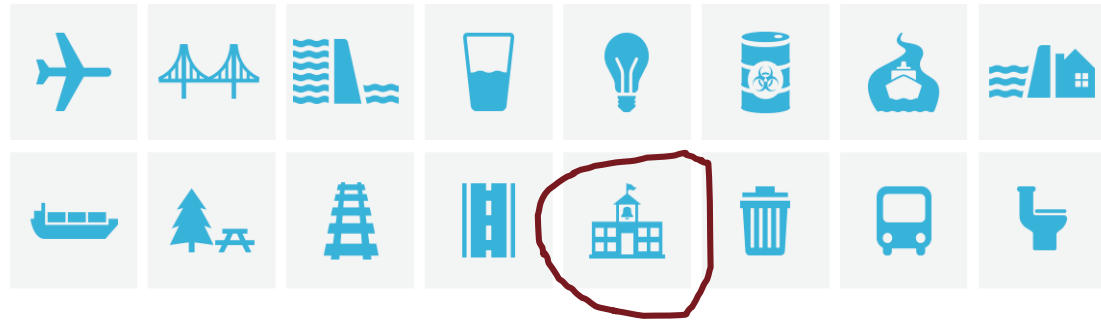
Percentage of standard met by historic M&O spending
and capital investment, FY2015



Source: State of Our Schools 2016

It's the time to make the case for schools

National attention on infrastructure



- A \$1 trillion federal infrastructure plan with 10% for public schools = \$100 billion toward \$870 billion needed over the next 10 years.

**Bills
introduced
in U.S.
Senate and
House**

115TH CONGRESS
1ST SESSION

S. 1674

To provide grants for the repair, renovation, and construction of public elementary schools and secondary schools, to establish a school infrastructure bond program, and for other purposes.

115TH CONGRESS
1ST SESSION

H. R. 2475

To provide for the long-term improvement of public school facilities, and for other purposes.

Political progress

- **72%** of public supports schools as a priority in federal infrastructure bill (2018 Harvard/Politico poll) (incl. 68% of Republicans)
- **100+** meetings with Senate and House members and staff
- Senate Democratic Plan, March 2018: **\$50b** for public school infrastructure
- ***Momentum*** like never before



BASIC

[Re] **B**uild **A**merica's **S**chool **I**nfrastructure **C**oalition

**21st CENTURY
SCHOOL FUND**

IMPROVING URBAN PUBLIC
SCHOOL FACILITIES



**NATIONAL COUNCIL
ON SCHOOL FACILITIES**

States Advancing Effective K-12 Policy, Planning, and Practice

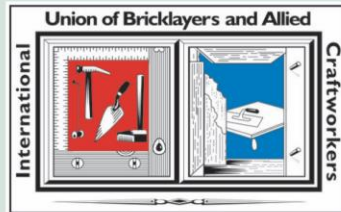


**CENTER FOR
CITIES+SCHOOLS**
UNIVERSITY OF CALIFORNIA BERKELEY

**THE CENTER
FOR GREEN SCHOOLS**



**Johnson
Controls**



**ASSOCIATION OF
SCHOOL BUSINESS OFFICIALS
INTERNATIONAL**



**PHILLY HEALTHY
SCHOOLS INITIATIVE**



NASSP™
National Association
of Secondary School Principals

**We need
your help**



BASIC

[Re] **B**uild **A**merica's **S**chool **I**nfrastructure **C**oalition



Basketball Court
Key Elementary School

Healthy Child
Development

Quality
Education



Children's Garden Classroom
DC Bilingual Elementary School



Early Childhood Area
Bancroft Elementary School (former play area)

Community
Vitality

Sustainable
Environment



Small Athletic Field
Eaton Elementary School

21st Century School Fund

#fixourschools www.buildusschools.org